



# Mojo Packets

WiFi Knowledge Summit 2016

Gopinath KN  
VP Engineering  
Mojo Networks

Himanshu Chhangani  
SMTS  
Mojo Networks

# Mojo Packets : Next gen WiFi Troubleshooting Tool

## Agenda :

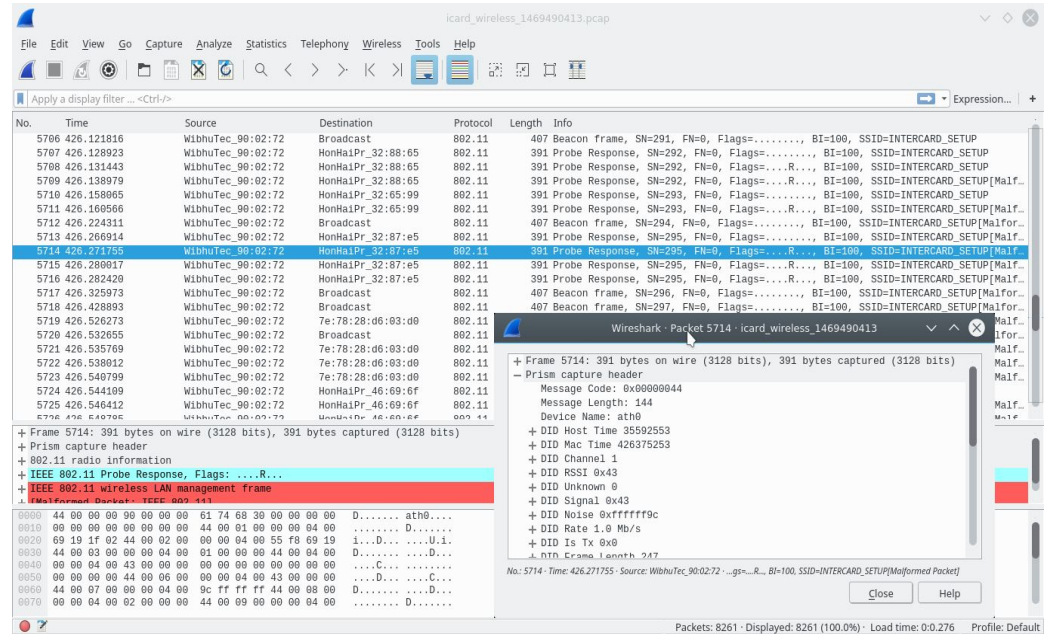
- Current State of Art
- Introduction to Mojo Packets
- Demo
- Next steps



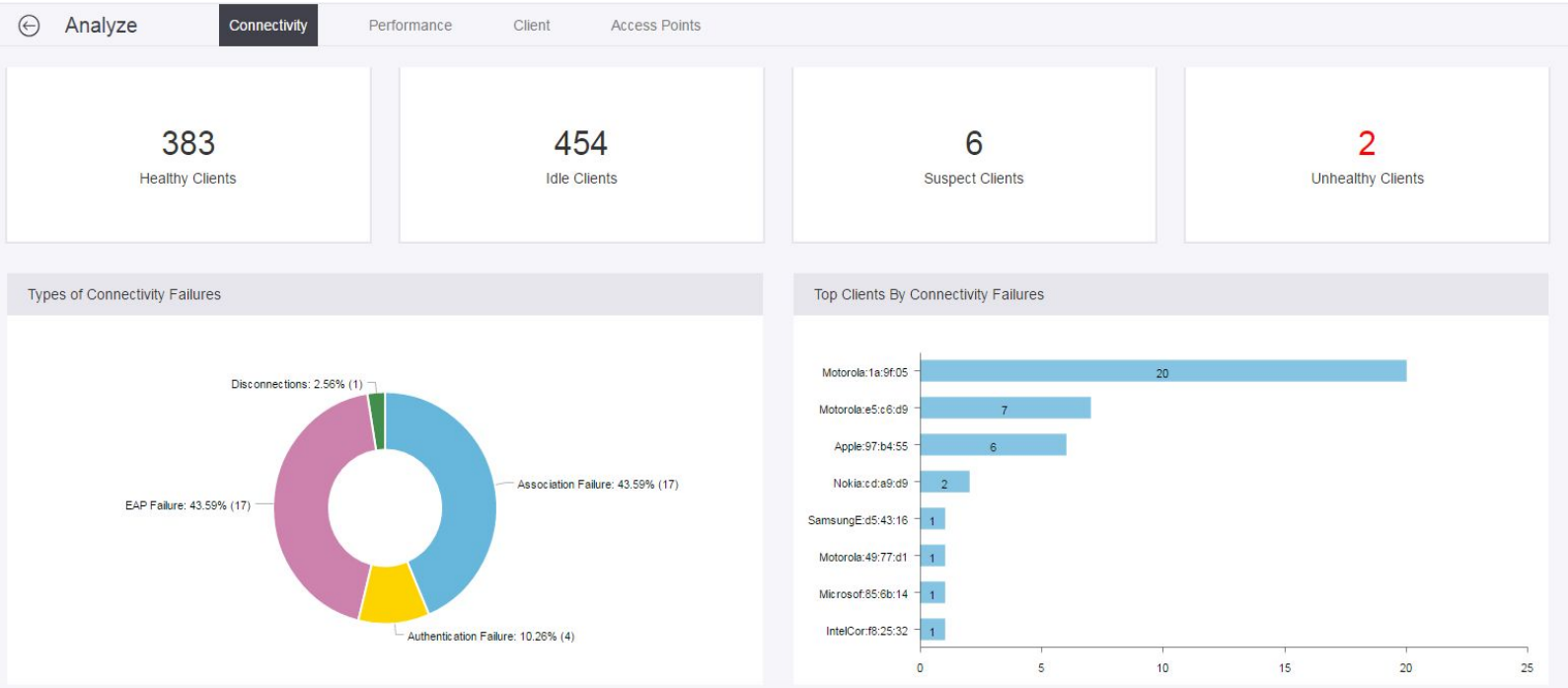
# Current state of art for Trace Analysis: Wireshark

## Great tool, but,

- Requires high degree of protocol expertise
- Time consuming diagnosis.
- Trace Fatigue!

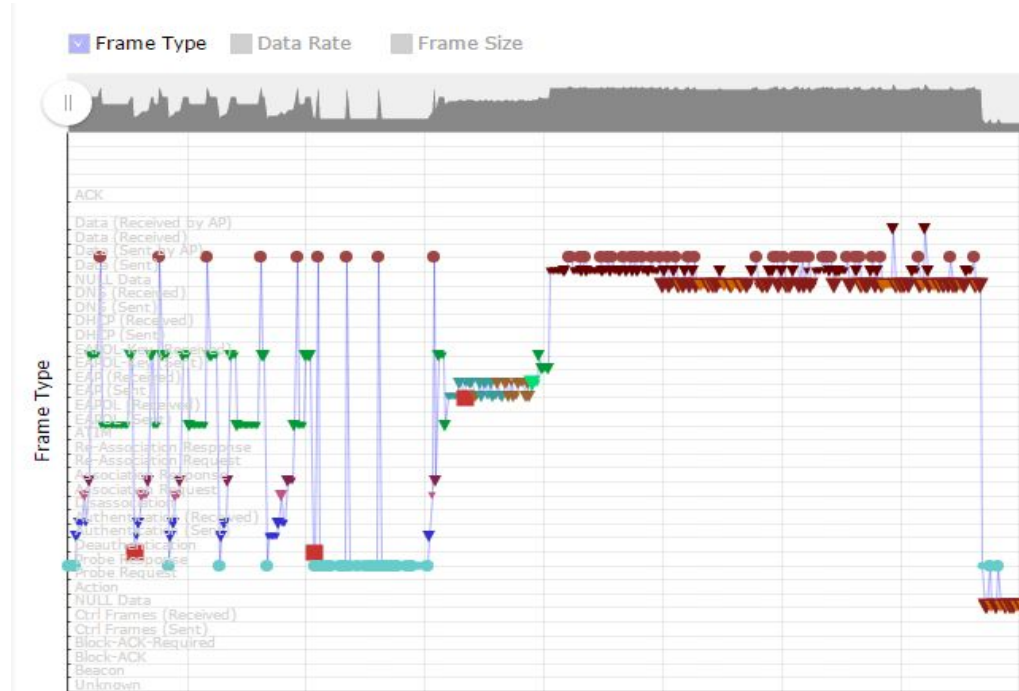


# Introducing Mojo Packets



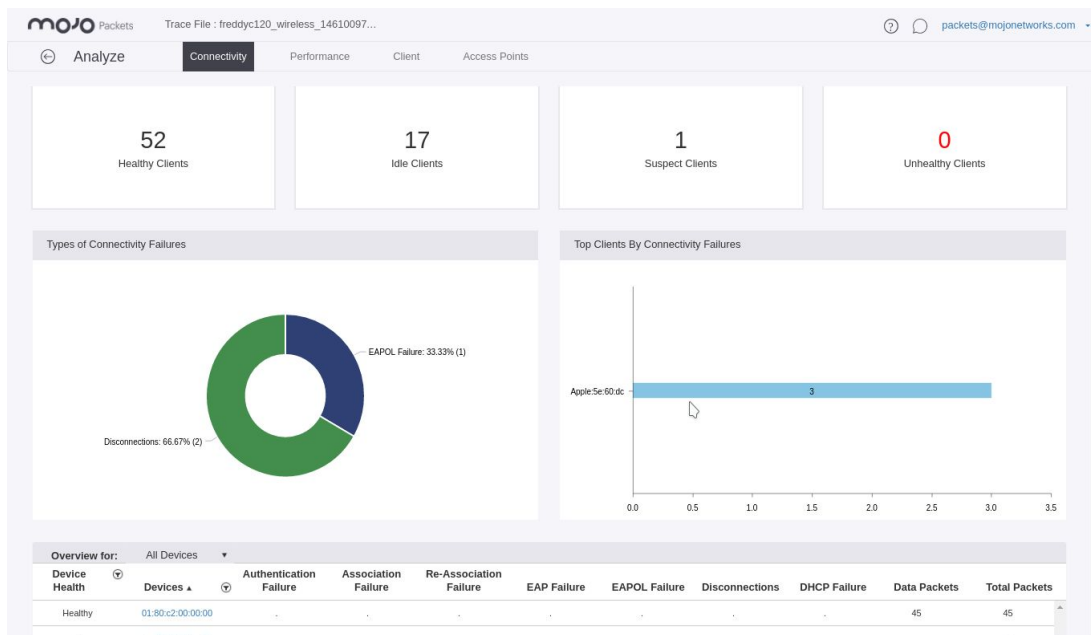
# Salient Features

- Advanced technology.
  - Cloud based.
  - Extensive Coverage.
  - Auto-Classification.
  - Visual root cause analysis.
  - Collaborative troubleshooting.
- Vendor agnostic.
- Free.



# Design principles

- Simplify Troubleshooting.
- Intuitive UI/UX.
- Provide insights at a glance



# What in there for you?

- **SysAdmin**
  - **Fast identification of a problem in Network** #AutoClassification
  - Fast identification of an issue with a specific client #FailureCharts #PerformanceCharts
- **L3 Support**
  - **Visual identification of a connectivity and performance issue** of a specific client.
  - More **granular analysis** of the WiFi network.
- **WiFi Developers**
  - **Trace data mining.**
  - Testing tool
  - Debugging tool
  - Performance analysis tool
- **Higher-Ed Networking Student/Teacher**
  - Can act as an **educational tool**

# Demo Traces



# Case study : Client Roaming Aggressively

## Issue :

- Device having intermittent connectivity.

## Mojo Packets reveals -

- Connected clients - **5**
- Problematic client - **1 (Device mac identified)**
- Client having **Association and Reassociation failures**
- Connection drops due to **Aggressive roaming.**

[Click to view trace on Mojo Packets](#)



# Case study : Analysing traffic of a network.

## Objective:

- Proactively diagnose issues in a network

## Mojo Packets reveals -

- Connected clients - **383/800**
- Problematic client - **6 (Device macs identified)**
- Client having **EAPOL failure, ASSOCIATION failures**

[Click to view trace on Mojo Packets](#)



# Mojo Packets : Next steps

- **Live streaming** of a trace from an AP to Packets
  - Real-time detailed visual analysis of a packet trace
  - Seamless integration with no need to deal with a trace at all (or with the concept of trace)
- **Pro-active trace collection** for reducing the MTTR
- **Pure Wireshark-style view** for those who want to dig even further.



Sign up here - [www.app.mojopackets.com](http://www.app.mojopackets.com)

How to Capture a Trace - [Click here](#)

Thank You.